



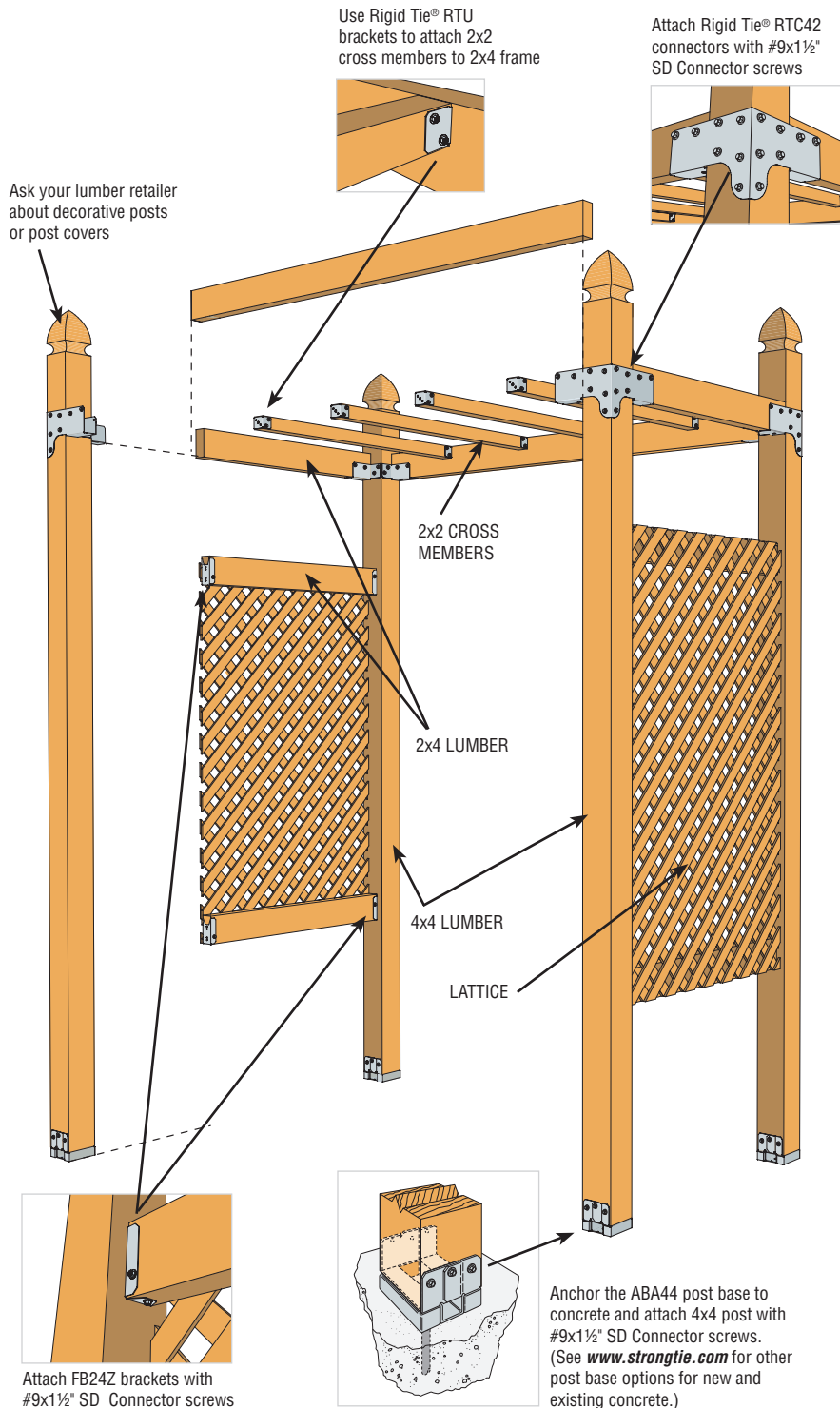
ENHANCE THE BEAUTY OF YOUR BACKYARD

Garden Trellis

Build this trellis to give your landscape an interesting focal point while getting the most from your home improvement dollar. Simpson Strong-Tie® connectors make it quick and easy to build this simple, strong structure in just one day. Use cedar lumber with a weather-proof stain, to dress it up or customize to fit your needs. Simpson Strong-Tie® post bases make it easy to anchor your trellis securely to concrete.



Check out our installation and building tip videos at diydoneright.com.



TOOLS YOU NEED

- Saw
- Screw gun
- #2 Phillips head bit
- ¼" hex head socket
- Tape measure
- Clamps
- Framing square
- Straight edge

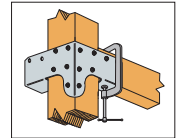
RIGID TIE® RTC42 CONNECTOR INSTALLATION INSTRUCTIONS

1. CUT LUMBER AND PLYWOOD TO SIZE.

Since all of your cuts are straight cuts, Simpson Strong-Tie® connectors simplify building with wood.

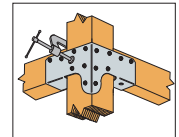
2. INSTALL CONNECTOR ON VERTICAL POST.

Mark height, clamp connector to post and attach with Simpson Strong-Tie® #9x1½" Strong-Drive® SD Connector screws.

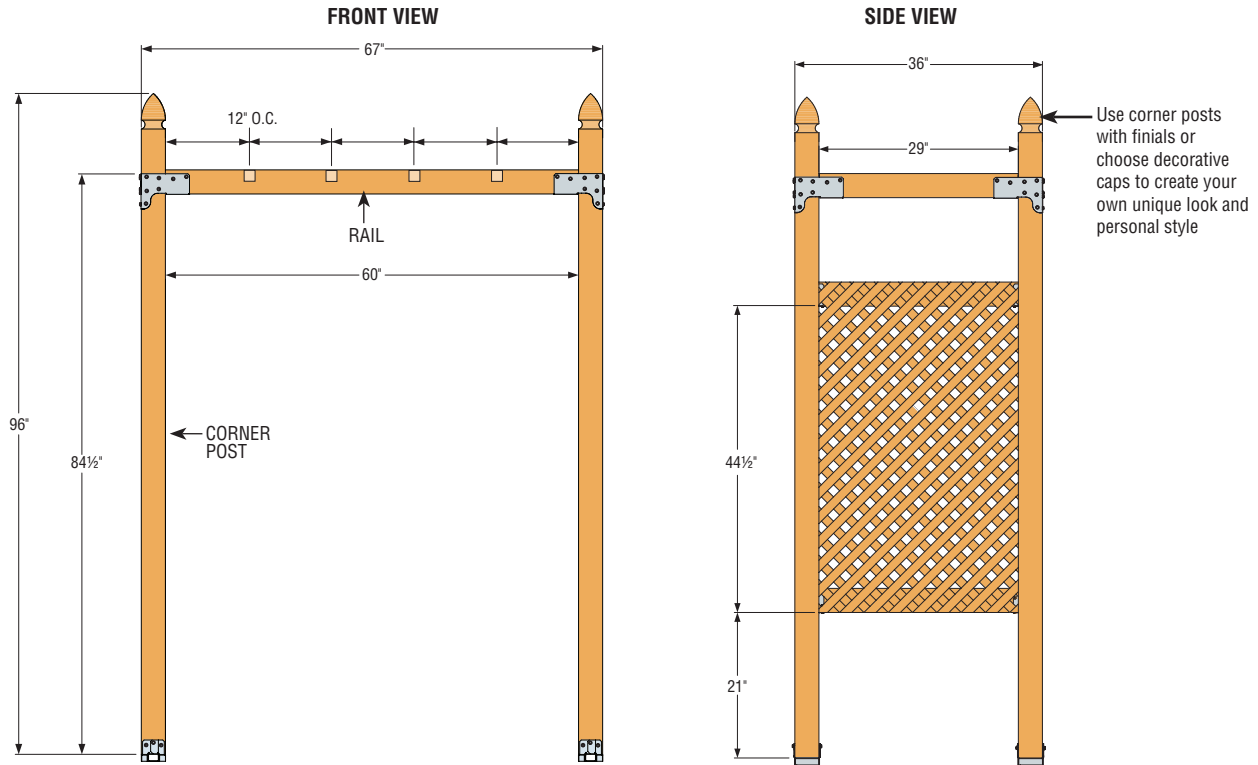


3. CONNECT HORIZONTAL RAIL ON EACH SIDE.

Use a clamp to help hold the wood in the seat of the connector during installation.



8 ft. Tall Garden Trellis



FOR THIS PROJECT YOU WILL NEED:

LUMBER*

- (4) – pieces of 4x4 8 ft. lumber
- (4) – pieces of 2x4 8 ft. lumber
- (2) – pieces of 2x2 8 ft. lumber
- (1) – 4 ft. x 8 ft. sheet of lattice (wood or plastic)

SIMPSON STRONG-TIE® CONNECTORS**

- (4) – Rigid Tie® RTC42 connectors
- (8) – Rigid Tie® RTU2 brackets
- (8) – FB24Z brackets
- (4) – ABA44 post bases

FASTENERS

- (2) – **BOXES** Simpson Strong-Tie® #9x1 1/2" Strong-Drive® SD Connector screws
- (20) – #8x1 1/4" flat-head screws
- (4) – Anchors (for existing or new concrete)

4x4 x 8' LUMBER

- (4) – 96" CORNER POSTS → (4x)

CUT FROM 2x4 x 8' LUMBER

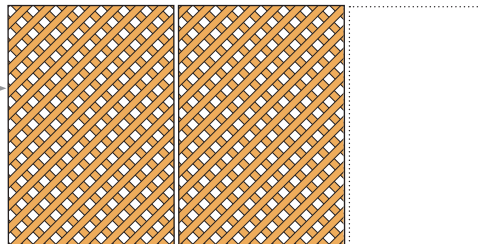
- (2) – 60" HORIZONTAL RAILS → (2x)
- (6) – 29" END RAILS → (2x)

CUT FROM 2x2 x 8' LUMBER

- (4) – 29" TRELLIS RAFTERS → (2x)
(Results in 2 extra scrap rafters)

(2) – 29" x 48" LATTICE SIDES

Cut 2 from (1) 4' x 8' sheet.
Attach with #8x1 1/4" flat-head screws at 8" spacing.



*Use preservative-treated wood or non-treated wood with exterior-grade paint or stain.

**CORROSION INFORMATION: We recommend using our ZMAX® galvanized product for best results on exterior projects and those using preservative-treated wood. These products have a "Z" at the end of the model number (ex. RTC42Z). ZMAX® coated products provide additional corrosion resistance, which is advisable, but not required, for non-structural projects like the one shown above. Visit strongtie.com/info for critical information.

The construction plan for this project is designed to be completed by people with basic carpentry skills in standard situations. If your situation is unique, talk with someone with detailed carpentry or construction experience before starting your project. Particular attention was paid to the steps and details in this plan, but they cannot be guaranteed to be error free. Simpson Strong-Tie shall not be responsible for any possible loss, damage or injury resulting directly or indirectly from the information contained here.